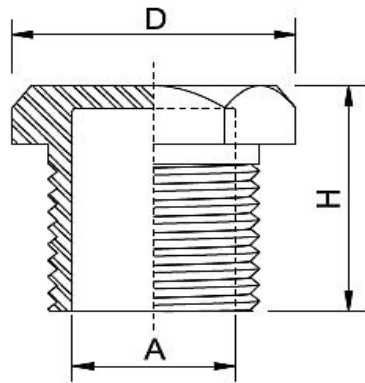




**STAINLESS STEEL**  
**150 LBS SCREWED FITTINGS**  
**BSPP (ISO 228-1), BSPT (ISO 7-1), NPT THREAD**  
 DIMENSION CONFORM TO ASME B16.3 AND ANSI/MSS SP-114-2018 WHERE APPLICABLE  
 MATERIAL CONFORM TO ASTM A351 GR. CF8 & CF8M  
 (PRESSURE-TEMPERATURE RATINGS 300 PSI-29 TO 66°C)  
 MADE BY LOST WAX INVESTMENT CASTING



## HEX PLUG

SIZE	A	D	H	Weight
	(mm)	(mm)	(mm)	(Kg/Pc)
1/8"	-	12.9	15.4	0.012
1/4"	-	15.9	17.5	0.021
3/8"	9.5	19.8	18.8	0.030
1/2"	14.5	22.9	20.5	0.030
3/4"	18.8	27.8	23.3	0.050
1"	24.7	36.9	26.0	0.100
1 1/4"	32.5	44.8	29.7	0.150
1 1/2"	38.3	49.8	30.5	0.190
2"	50.5	61.8	33.8	0.300
2 1/2"	64.5	79.0	40.0	0.550
3"	76.5	91.4	41.2	0.710
4"	102.3	116.6	45.0	1.240